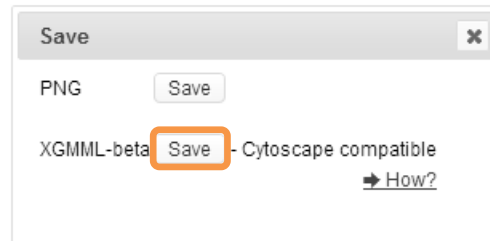


How to import web network into Cytoscape desktop?

1 Download xgmml network from Cytoscape web view.



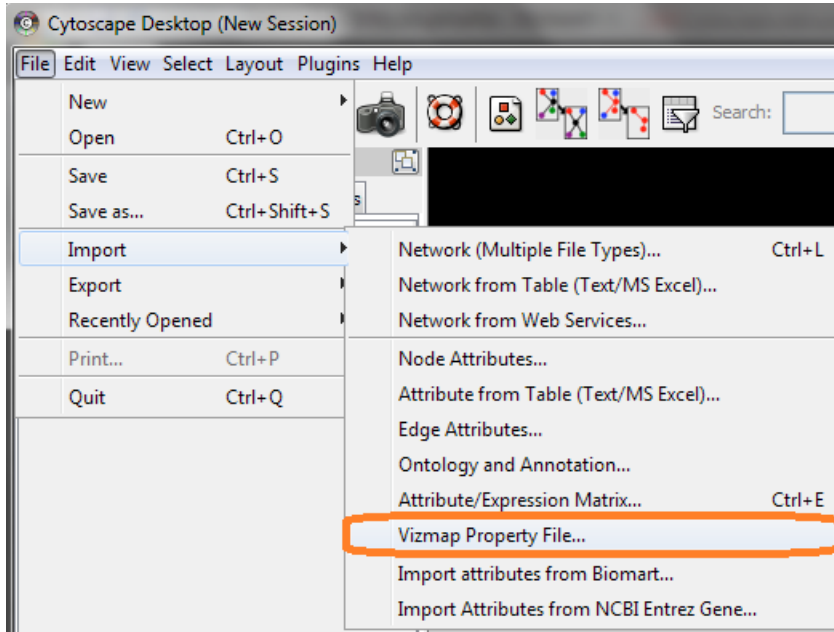
2 Download Cytoscape Vizmapper property file from [here](#).

3 Open Cytoscape Desktop (2.x or 3.x)

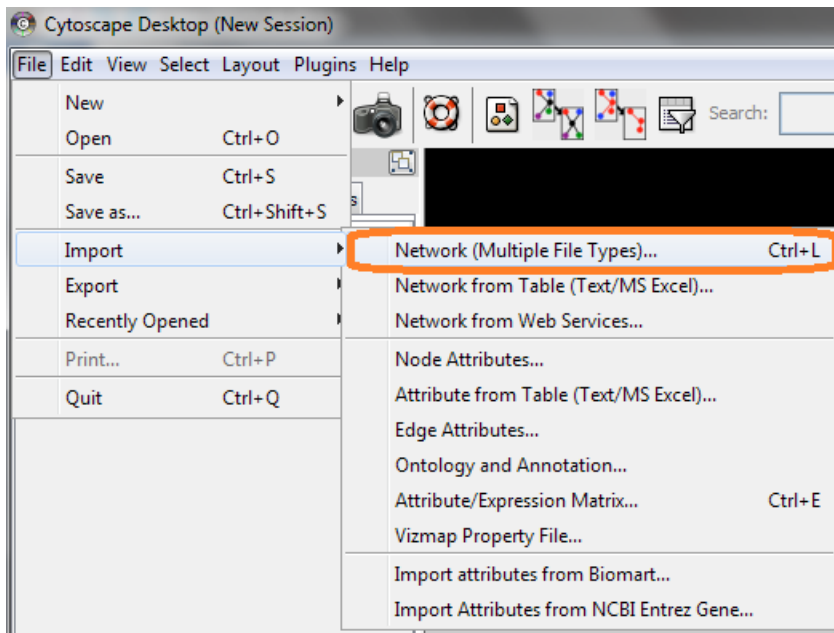


For Cytoscape 2.x

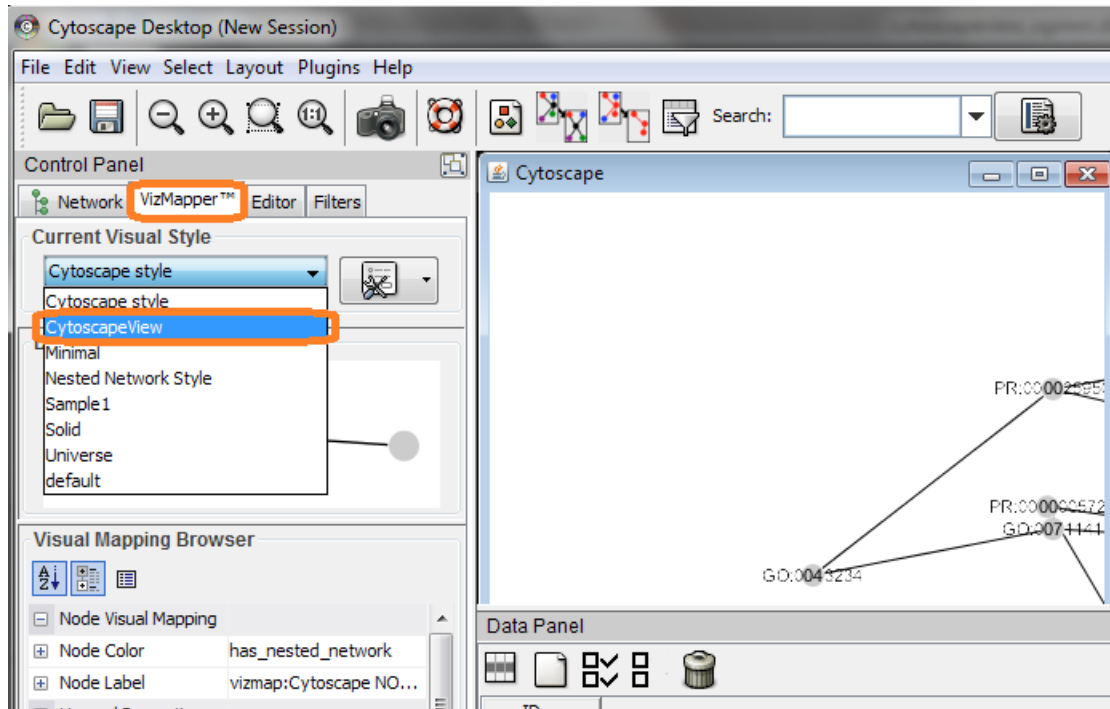
4 Import Vizmapper file first



5 import network from file: cytoscapeView.xgmml



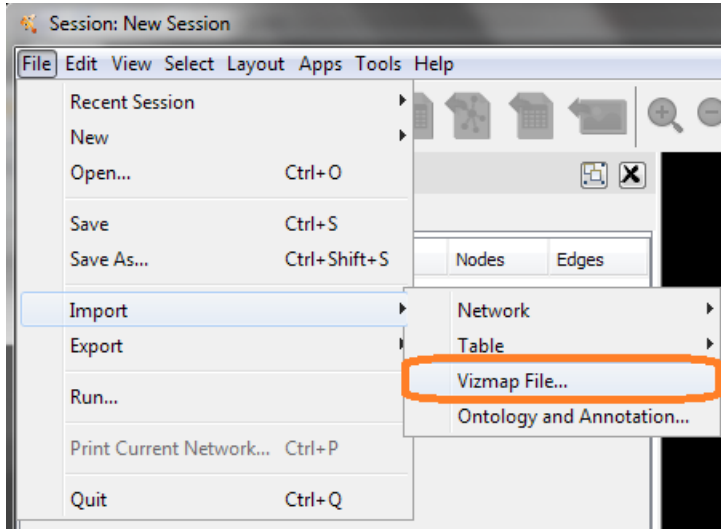
6 Go to Vizmapper tag, change "current visual style" to "CytoscapeView".



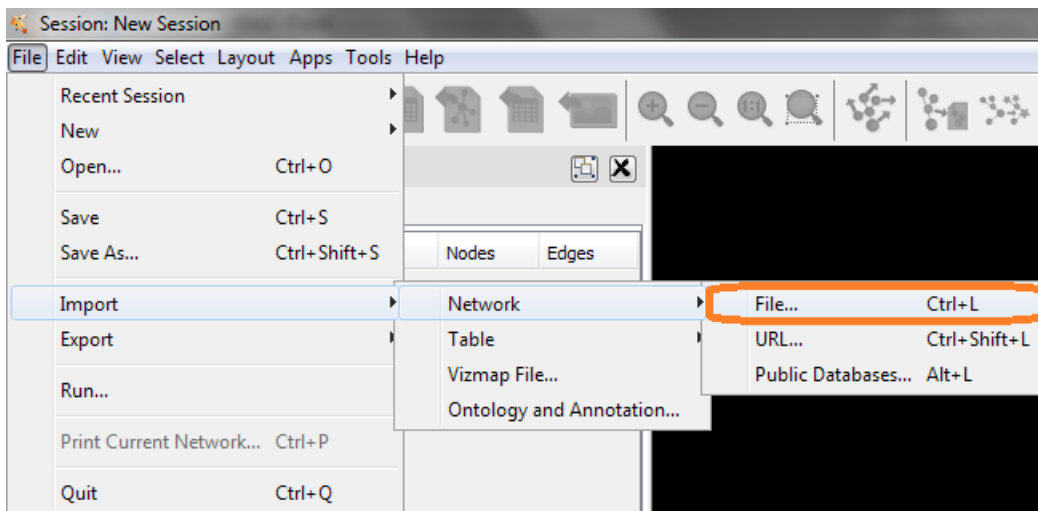
Done!

For Cytoscape 3.x

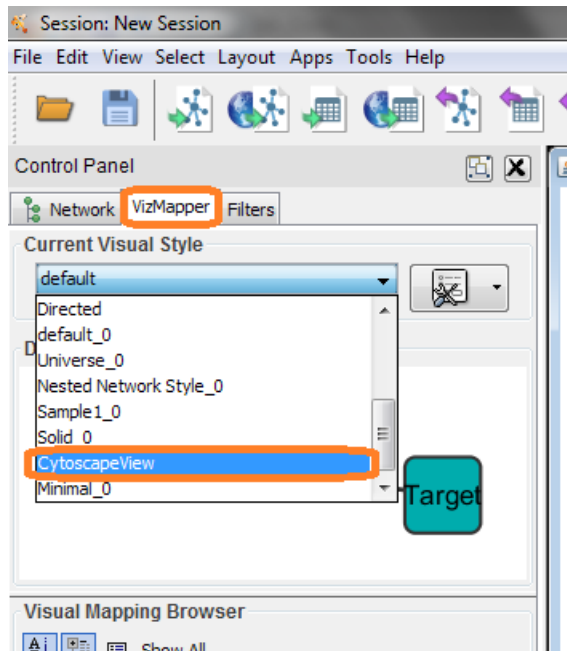
4 Import Vizmapper file first



5 import network from file: cytoscapeView.xgml



6 Go to Vizmapper tag, change "current visual style" to "CytoscapeView".



Done!